

- ▲ In-Service Timber Trestle (4)
- ⊗ Demolished NR Timber Trestle (1)
- Preserved Timber Trestle (0)

Timber Trestle Bridges



HISTORIC BRIDGE #15767
COUNTY ROAD 14
PHILLIPS COUNTY
TIMBER TRESTLE
CROSSES - LITTLE CYPRESS CREEK
DATE OF CONSTRUCTION – 1942
BUILDER - PHILLIPS COUNTY WORK CREW
HISTORIC BRIDGE INVENTORY DATE - 1995
SHPO NUMBER – PH0248
HAER NUMBER -
DATE LISTED ON NATIONAL REGISTER - 5/18/1995
LAT./LONG. 34:20:10.97, -91:00:41.71

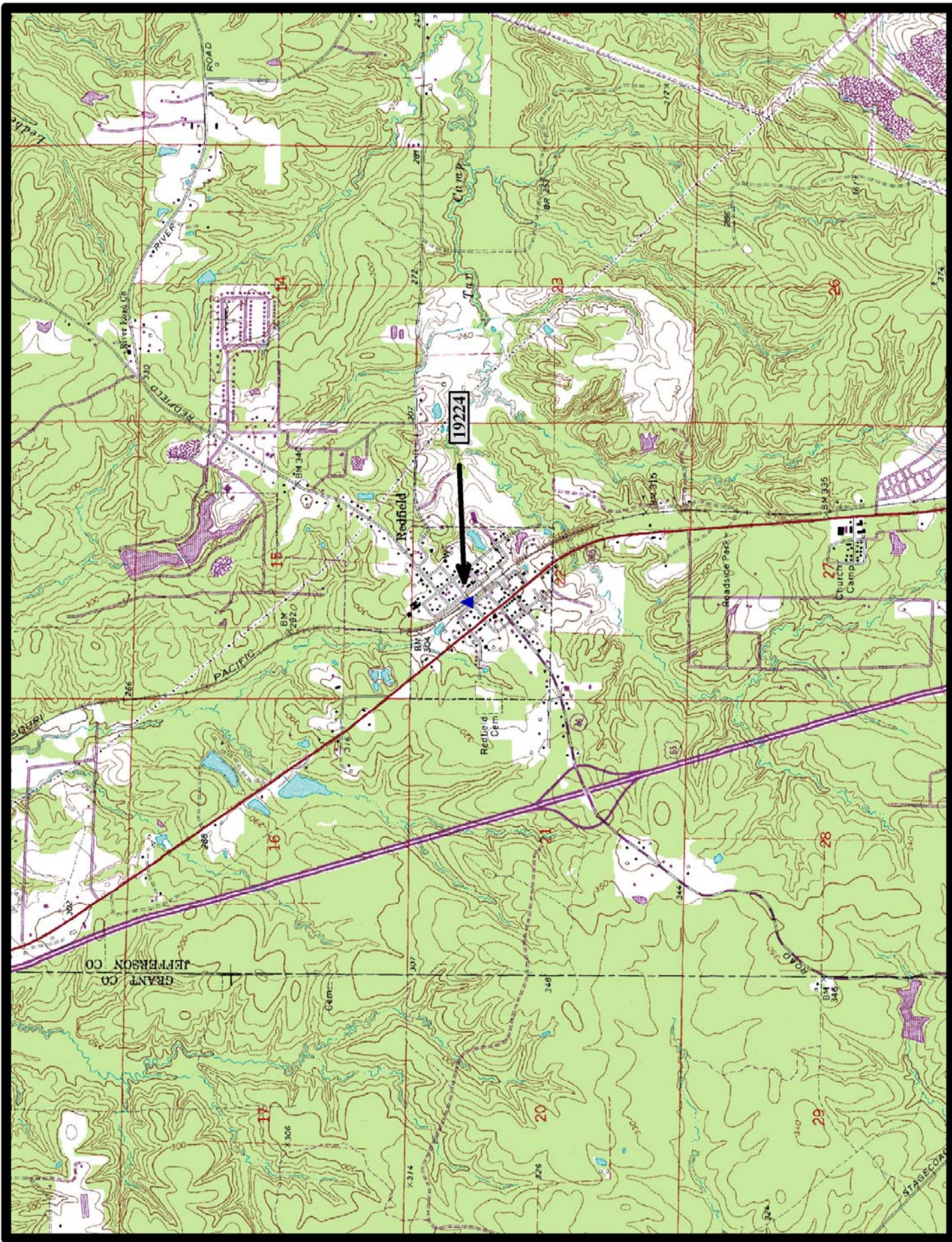


North

Pine City 7.5 min. Quad



HISTORIC BRIDGE #19224
WEST JAMES STREET
JEFFERSON COUNTY
TIMBER TRESTLE
CROSSES - UNION PACIFIC RAILROAD
DATE OF CONSTRUCTION - 1924
BUILDER - MISSOURI - PACIFIC RAILROAD
HISTORIC BRIDGE INVENTORY DATE - 1995
SHPO NUMBER - JE0534
HAER NUMBER - AR-78
DATE LISTED ON NATIONAL REGISTER - 5/18/1995
LAT./LONG. 34:26:44.81, -92:11:05.15

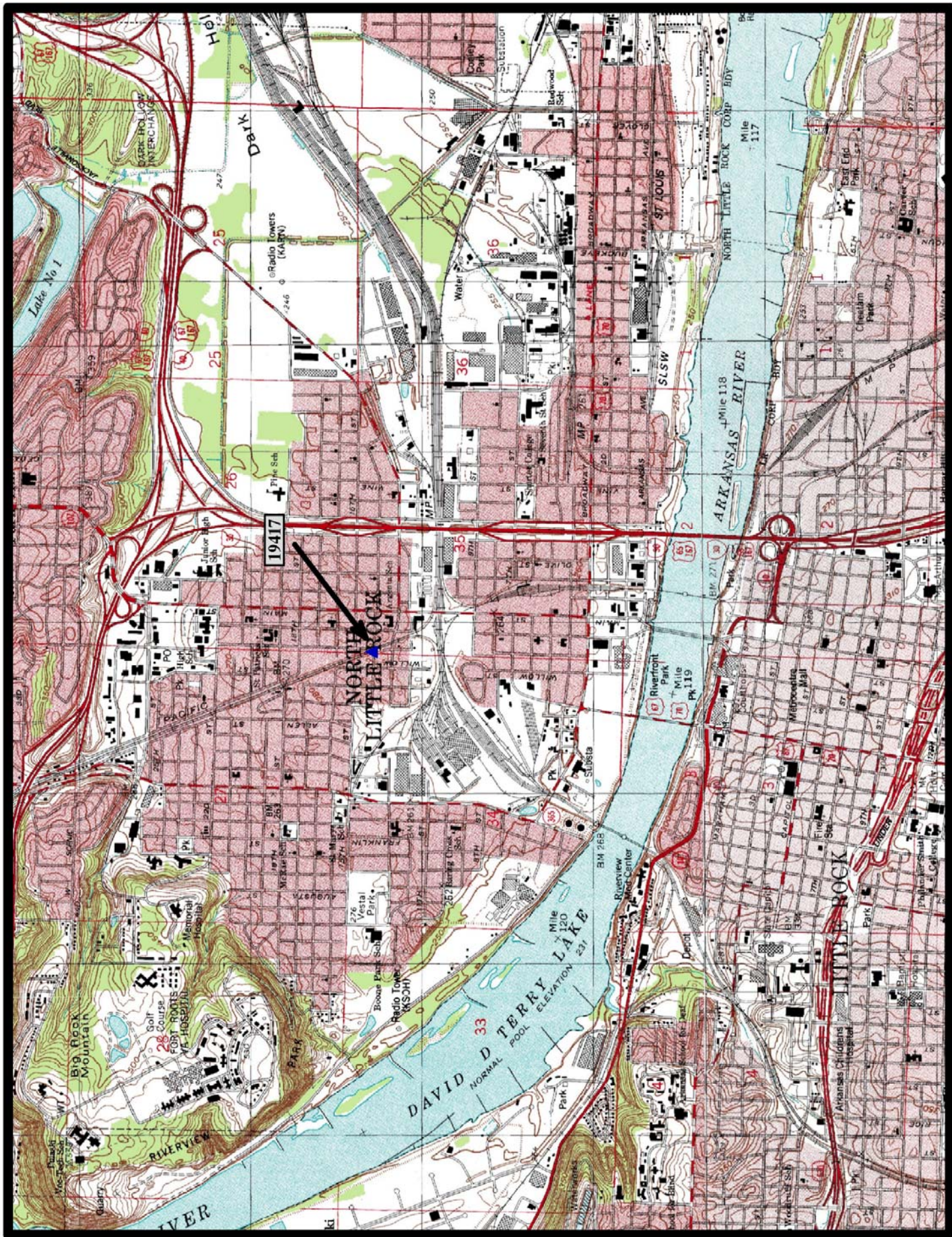


←
North

Redfield 7.5 min. Quad



HISTORIC BRIDGE #19417
WEST 14TH STREET
PULASKI COUNTY
TIMBER TRESTLE
CROSSES - UNION PACIFIC RAILROAD
DATE OF CONSTRUCTION - 1925
BUILDER - MISSOURI - PACIFIC RAILROAD
HISTORIC BRIDGE INVENTORY DATE - 1987
SHPO NUMBER - PU2027
HAER NUMBER - AR-42
DATE LISTED ON NATIONAL REGISTER -
LAT./LONG. 34:46:03.65, -92:16:10.95

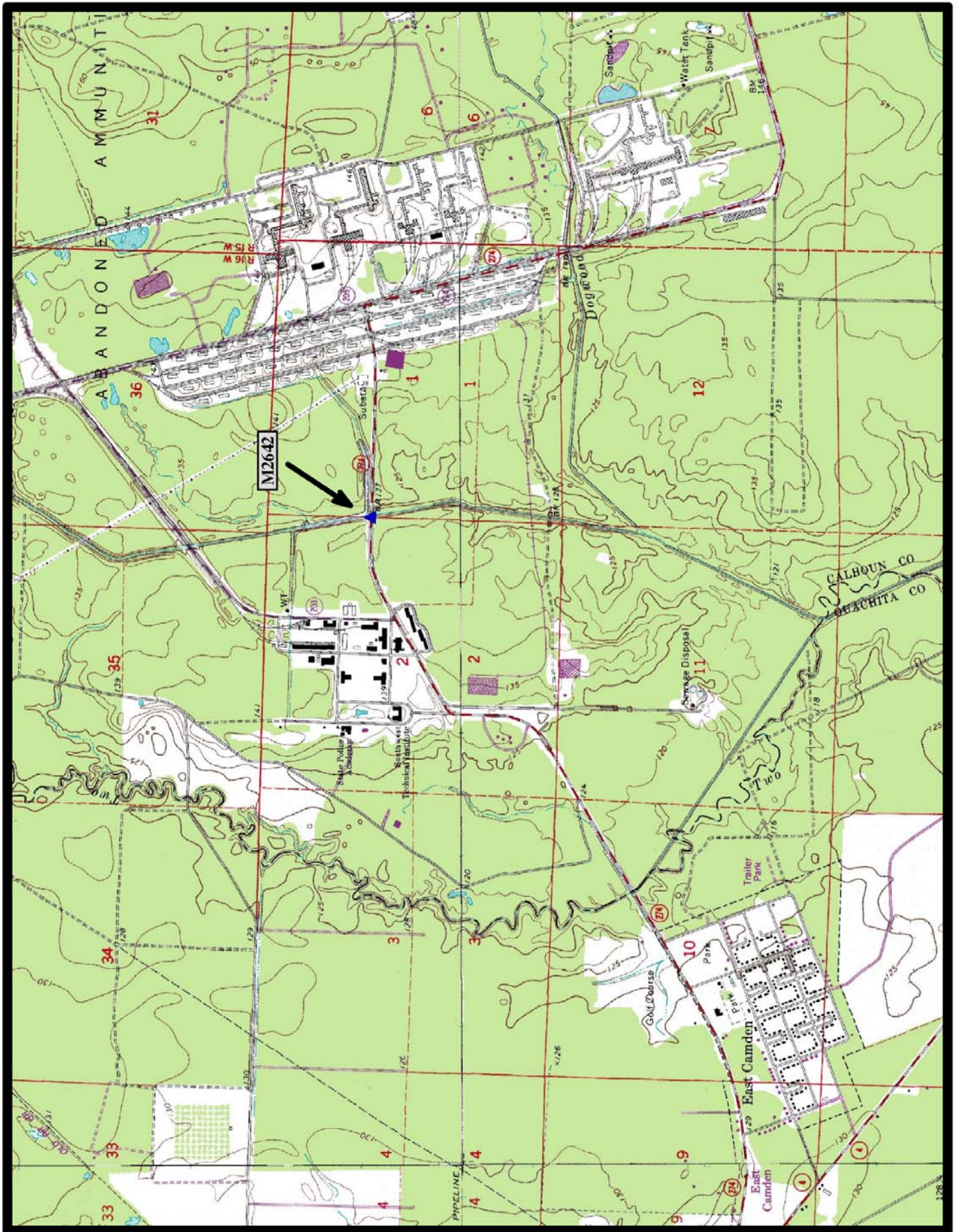


↑
North

North Little Rock 7.5 min. Quad



HISTORIC BRIDGE #M2642
STATE HIGHWAY 274
CALHOUN COUNTY
TIMBER TRESTLE
CROSSES - DRAINAGE DITCH
DATE OF CONSTRUCTION - 1940
BUILDER - UNKNOWN
HISTORIC BRIDGE INVENTORY DATE - 1995
SHPO NUMBER - CA0023
HAER NUMBER -
DATE LISTED ON NATIONAL REGISTER - 5/18/1995
LAT./LONG. 33:37:47.16, -92:42:32.58



Eagles Mill 7.5 min. Quad

North